



AIR CAPS, FLUID ORIFICES AND NEEDLES AVAILABLE FOR THE *TommyGun* SPRAY GUN

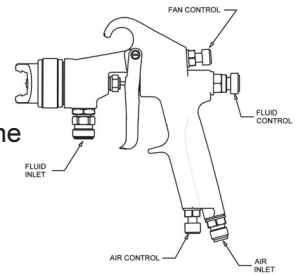
AIR CAPS	APPROXIMATE CFM	AVAILABLE FLUID NOZZLES TIPS	NEEDLES / marking on needle
21-2163	8	31-0606 0.6mm (.022")	40-2807 (2807)
21-2263	14	31-0607 0.7mm (.028")	40-2807 (2807)
21-2166	5	31-0612 1.2mm (.046")	40-2810 (2810)
21-2266	12	31-0613 1.3mm (.052")	40-2810 (2810)
21-2266-3	16.2	31-0615 1.5mm (.059")	40-2815 (2815)
21-2366	12	31-0618 1.8mm (.070")	40-2815 (2815)
21-2466	15		
200*	5.2		

*200 air cap requires P/N 21-1583 base and 21-1584 ring

Operation and Maintenance Instructions for *TommyGun* Spray Guns

Operation

1. Connect air supply hose at handle of gun.
2. Connect a pressurized fluid supply or paint siphon cup to the gun fluid inlet.
3. Fluid flow can be controlled using the fluid control knob, this restricts flow by limiting needle travel. It is best to control fluid flow by proper selection of fluid orifice size and use the fluid control knob to “fine tune flow rate”.
4. Fan width can be adjusted using the fan control knob. Turning the knob clockwise narrows the fan.



Maintenance

IMPORTANT! Routine cleaning and maintenance is essential to insure proper gun operation. Several states prohibit spraying solvent into the atmosphere and require the use of covered gun cleaner.

1. If a gun cleaner is being used, connect and clean the gun in the gun cleaner according to the manufactures instructions.
2. If a gun cleaner is not being used:
 - Remove air cap and clean separately using clean solvent.
 - Connect a pressurized solvent supply to the fluid inlet, trigger the gun allowing solvent to flow thru the gun until clean.

NOTE:

- **Gun disassembly is not recommended for normal cleaning and maintenance.**
- **Not recommended to soak entire spray gun in solvent.**

Gun disassembly and reassembly instructions:

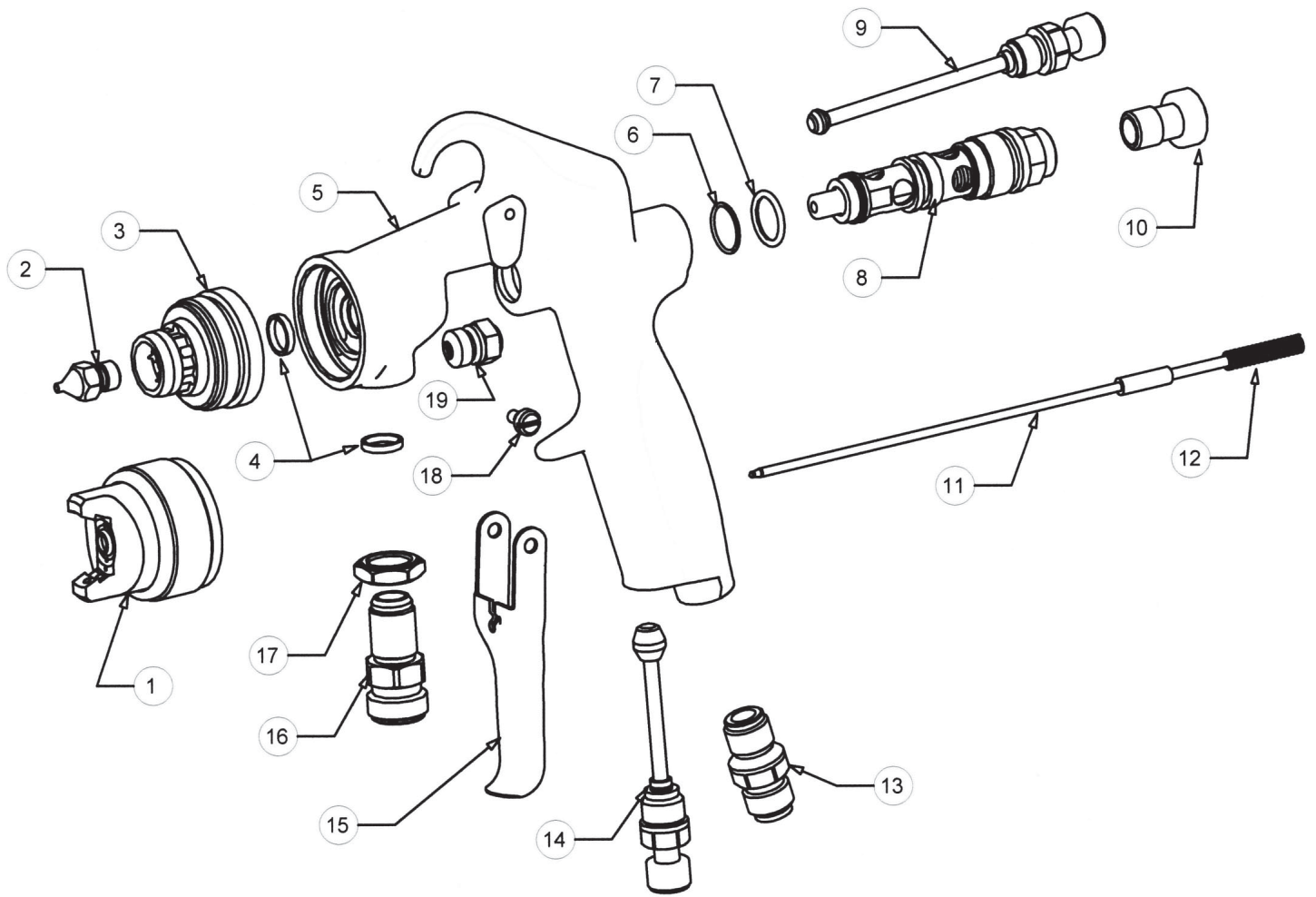
- **Have repair kit # 10-140 available before gun disassembly.**

Disassembly

1. Remove the trigger by removing both trigger screws (18).
2. Remove fluid control knob (10).
3. Remove needle return spring (12) and needle (11).
4. Remove air valve assembly (8) using a 9/16" wrench.
5. Using a 7/16" wrench remove the needle seal cartridge (19).
6. Using a 13 mm wrench remove the side port control (9).
7. Using a 13 mm wrench remove the air control (14).
8. Using a 11/16" wrench loosen locknut (17), using a 5/8" wrench remove fluid inlet (16).
9. Remove air cap (1), remove fluid tip (2) using a 3/8" wrench.
10. Using a 1" wrench remove head insert (3).

Reassembly

1. Install a new o-rings (6) and (7) on air valve assembly, lightly lubricate o-rings with vasoline and reinstall air valve (8) into gun body.
2. Install new seal (4) in gun body (5). Reinstall head insert (3) into gun body and tighten. Reinstall fluid tip (2) and tighten.
3. Install new seal (4) in gun body. Reinstall and tighten fluid inlet (16). Tighten locknut (17) after fluid inlet has been tightened.
4. Remove the shipping pin from a new needle seal cartridge. Install new needle seal cartridge (19).
5. Reinstall side port control (9), air control (14).
6. Reinstall needle (11), needle return spring (12) and fluid control knob (10).
7. Reinstall air cap (1).



ITEM NO.	PART NO.	DESCRIPTION	ITEM NO.	PART NO.	DESCRIPTION
1	See Air Cap Chart	Air Cap*	11	See Air Cap Chart	Needle*
2	See Air Cap Chart	Fluid Tip*	12	60-211	Needle Return Spring**
3	60-15C	Head Insert	13	60-104	Air Inlet Fitting
4	60-137	Seal**	14	60-1319	Air Control
5	60-1301GL	Gun Handle	15	60-2111	Trigger
6	98-5125	O-Ring**	16	60-132	Fluid Inlet
7	98-5225	O-Ring**	17	60-128	Locknut
8	60-1320	Air Valve Assembly	18	60-1315	Trigger Pivot Screw (2)
9	60-1317	Side Port Control	19	60-1329	Needle Seal Cartridge**
10	60-1312	Fluid Control Knob			

*See air cap selection chart on pages 1 & 4

**Indicates part included in repair kit # 10-140

FLUID NOZZLE / AIR CAP SELECTION CHARTS

TommyGun - Pressure / Siphon Feed Spray Guns

MATERIAL TYPE	FLUID ORIFICE x AIR CAP	MAXIMUM PATTERN WIDTH	CFM	PRESSURE / SIPHON
Very Thin less than 16 sec. Zahn #2 inks , dyes, solvents, stains	0.6, 0.7 mm x 2163	8	8	P
	0.6, 0.7 mm x 2166	9	5	S
	0.6, 0.7 mm x 2266	12	12	S
Thin 16 to 20 sec. Zahn #2 lacquers, enamels, primers, sealers	0.6, 0.7, 1.0 mm x 2163	8	8	P
	0.6, 0.7, 1.0 mm x 2263	14	14	P
	0.6, 0.7, 1.0 mm x 2366	14	12	S
	0.6, 0.7, 1.0 mm x 2266	10	12	S
	0.6, 0.7, 1.0 mm x 2466	13	15	S
Medium 21 to 30 sec. Zahn #2 automotive base coat enamels, primers epoxies, urethanes automotive clear coat	1.2, 1.3, 1.5, 1.8 mm x 2263	14	14	P
	1.2, 1.3, 1.5, 1.8 mm x 2266	10	12	S
	1.2, 1.3, 1.5, 1.8 mm x 2266-3	15	16.2	S
	1.2, 1.3, 1.5, 1.8 mm x 2466	13	15	S
Heavy over 30 sec. Zahn #2 heavy body primers high solid enamels high solid automotive coatings adhesives	1.5, 1.8 mm x 2263	14	14	P
	1.5, 1.8 mm x 2466	13	15	S